

Nokia Beacon 1.1 Configuration Guide – Mobile App



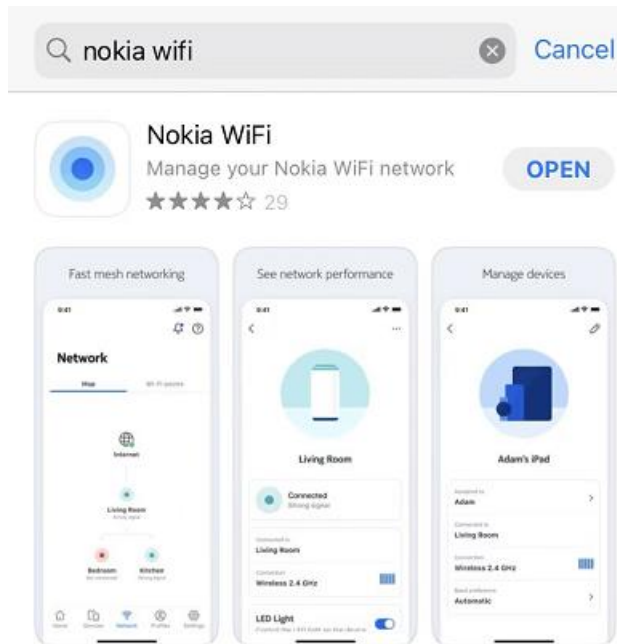
Fig: Nokia Beacon WiFi 1.1

Contents

Download the mobile app first	3
Set up new network	3
Reset the router	4
Scan the QR code	4
Check the connection	5
Connect to Wi-Fi	6
Enter PPPoE Details.....	7
Check the online status.....	8

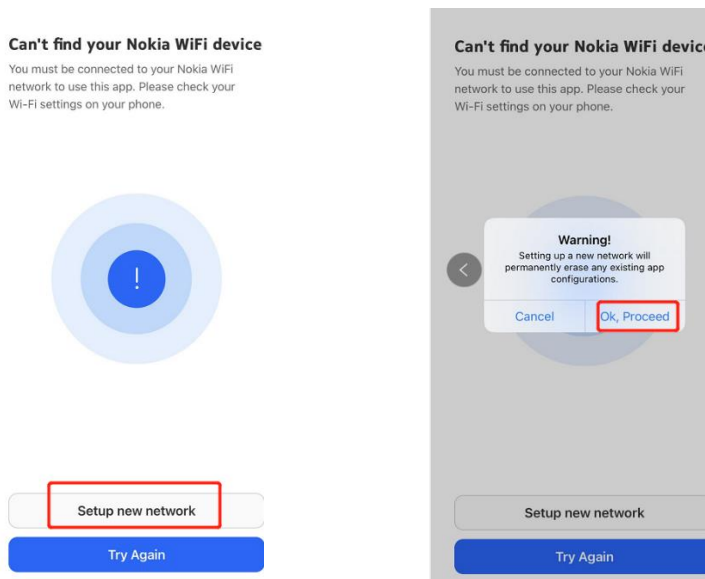
Download the mobile app first

Download the mobile app of Nokia WiFi either on Android (Play Store) or iPhone (Apple Store).



Set up new network

You must be connected to your Nokia WiFi network to use this app first. Please check your Wi-Fi setting on your phone.



Reset the router

To set up new network, you'll first need to do a factory reset on all of your WiFi-points. Use a paper clip to press and hold the "reset" button on the back of the modem until the LED is flashing red.

Setup new network

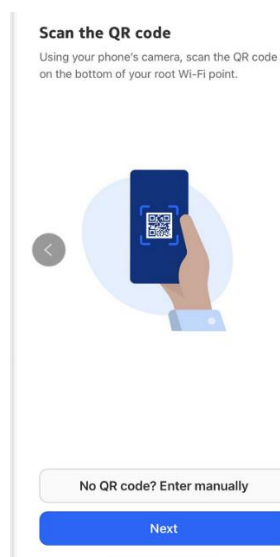
To set up a new network, you'll first need to do a factory reset on **all of your Wi-Fi points**. Use a paper clip to press and hold the "reset" button until the LED is flashing red.



Next

Scan the QR code

Using your phone's camera or QR scan code, scan the code on the bottom of your root Wi-Fi point.

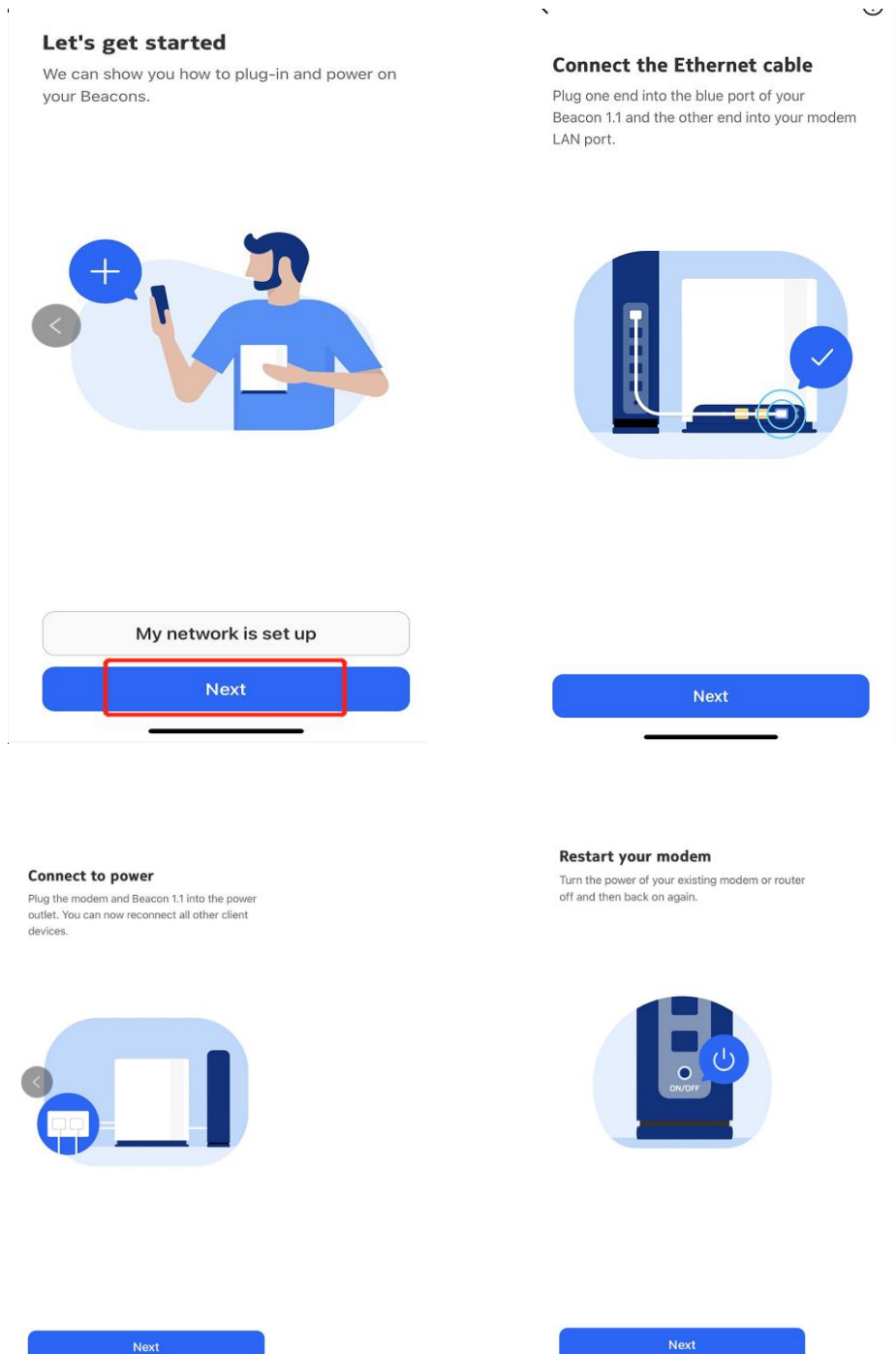


Check the connection

Check the connection of the router and the fibre box(modem)

We can show you how to plug-in and power on your Nokia Beacon WiFi.

1. Plug one end into the blue port of your Beacon 1.1 and then other end into your modem LAN port.
2. Plug the modem and Beacon 1.1 into the power outlet and after that you can now be able to reconnect all other client devices.
3. Turn the power of your existing modem or router off and then back on again.



Connect to Wi-Fi

Please connection this SSID in your WiFi list, use the Wi-Fi key that labelled on your router to connect to this WiFi

You'll further need this information to find and join your network.

Find the SSID and Wi-Fi key

You'll need this information to find and join your network.



Next



Preparing your Beacon 1.1

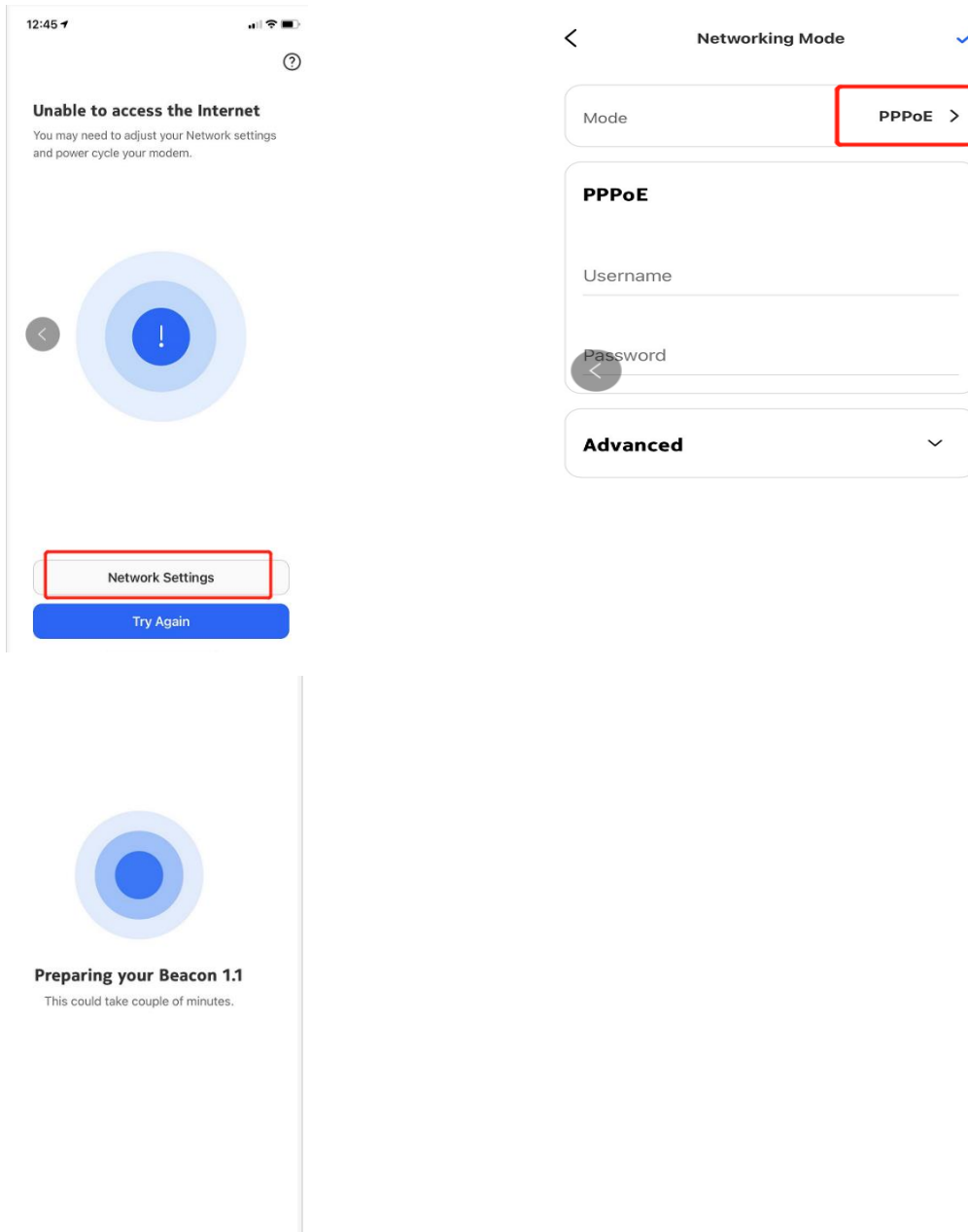
This could take couple of minutes.

04:19
Remaining

Enter PPPoE Details

Please select **Network settings** and choose **“PPPOE”** as the mode. Enter the PPPOE username and password we sent to you in your service activation email

You also may need to adjust your Network setting and power cycle your modem.



Check the online status

After entering the PPPOE details, click ok. After a few minutes, you should be online after a few minutes, enjoy your WiFi!