

# D-Link DIR-882 Setup Guide

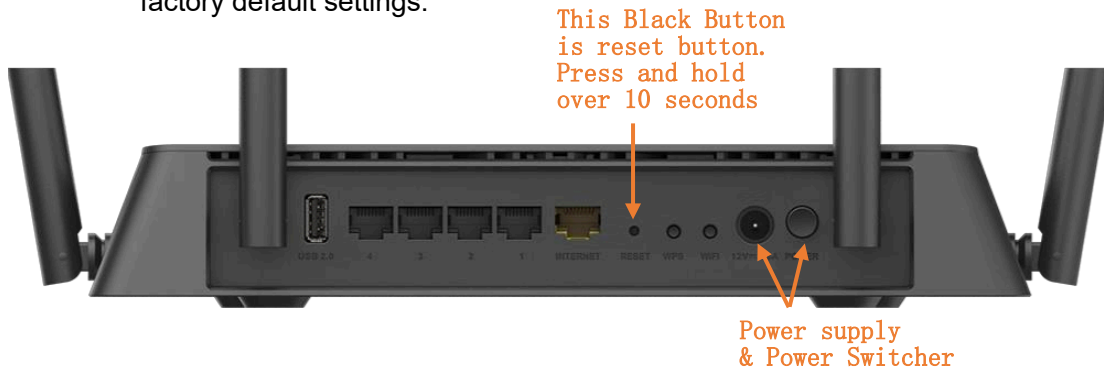


## Contents

1	Reset router .....	1
2	Setup router .....	1
	Ethernet cable connection .....	1
	WiFi connection.....	2
3	Login WIFI configuration page .....	2
4	Optional: Change your WiFi name and password/PIN.....	4

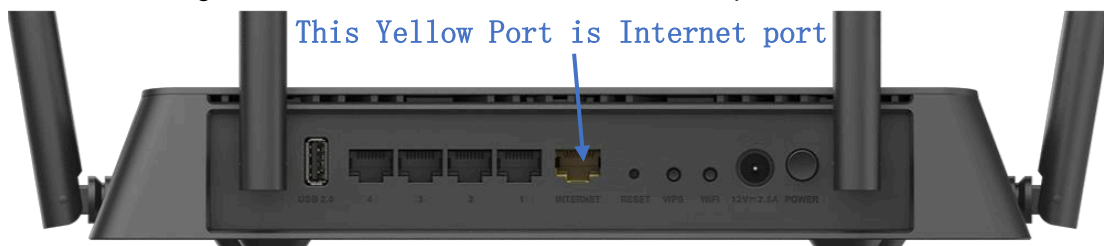
# 1 Reset router

- 1.1 Connect the router to power supply and turn on the router.
- 1.2 Press and hold this button for more than 10 seconds to reset the router to its factory default settings.



# 2 Setup router

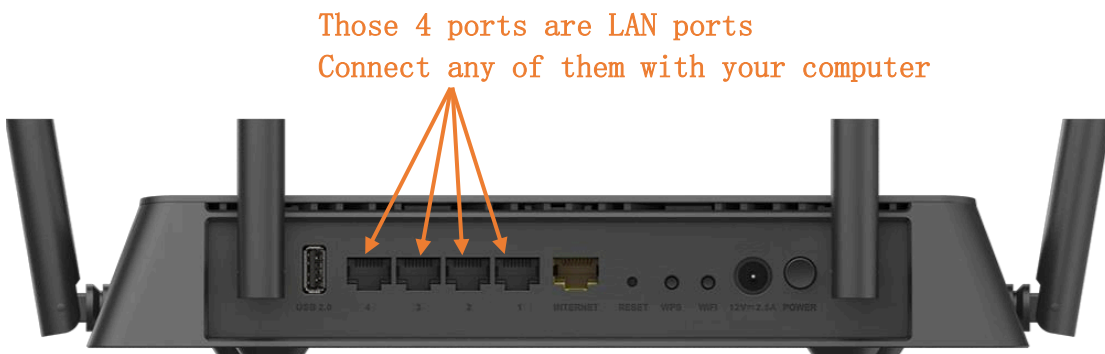
- 2.1 Using an Ethernet cable to connect the Internet port.



- 2.2 There are two methods to connect with your router:

## Ethernet cable connection

- 2.3 Turn off the WiFi on your laptop/PC and connect laptop/PC with any of LAN ports (1 –4 of router) via Ethernet cable.



## WiFi connection

You can use your laptop, tablet or phone to connect with router for setting through WiFi.

- 2.4 You can find the WiFi name and password/PIN at the back of router.

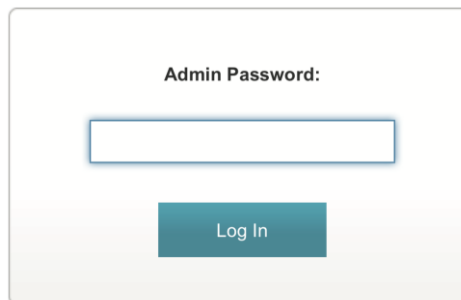


- 2.5 Click the network icon of your computer or go to Wi-Fi Settings of your smart device, and then select the SSID to join the network.

**\*Careful:** Once your device connect with haven't configured router, your device will temporarily out of Internet. So please do not use the device which is currently using Internet.

## 3 Login WIFI configuration page

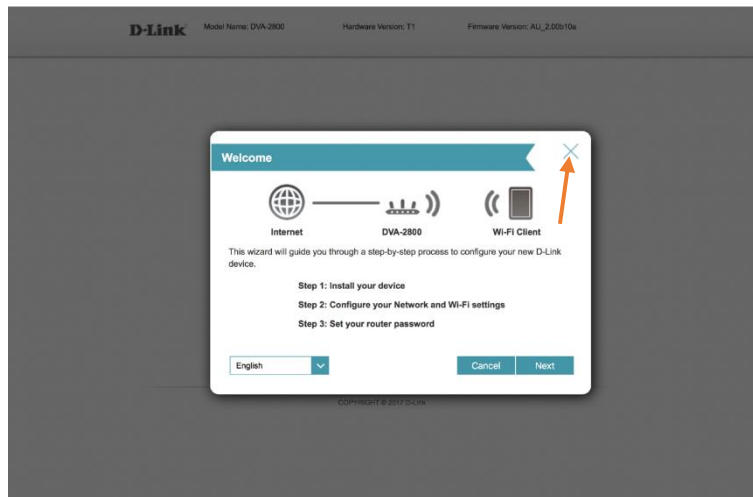
- 3.1 Open Internet browser (e.g. Google Chrome, Safari, etc.) and input <http://192.168.1.1/> or <http://192.168.0.1/> in the address bar to visit router's configuration page. The default username and password for this router is: **admin** (all Lowercase)



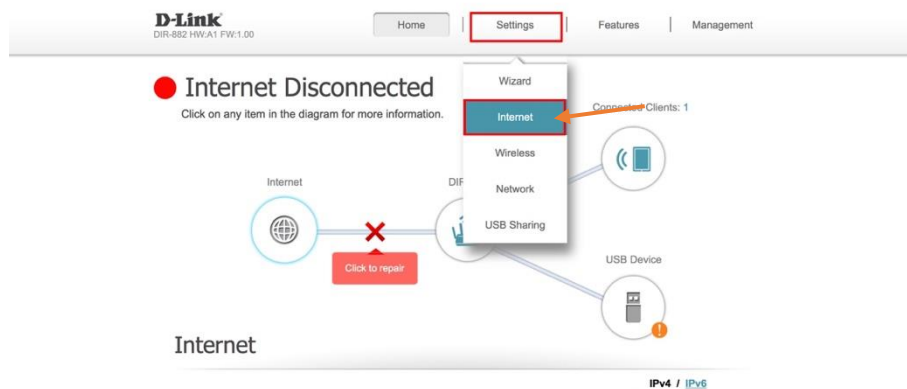
The image shows a login form for the router's configuration page. It contains the following elements:

- A label "Admin Password:" above a text input field.
- A "Log In" button below the input field.

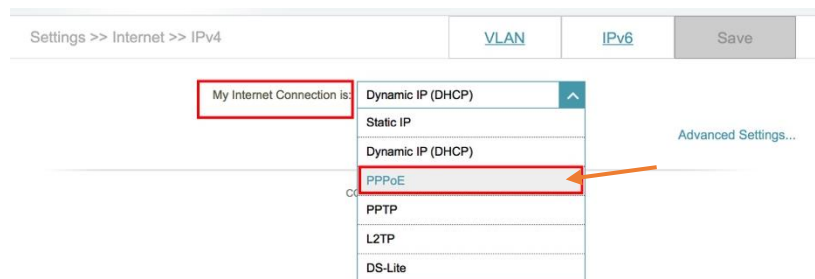
### 3.2 Once you login, close the Welcome Page



### 3.3 Click Setting -> Internet



### 3.4 Change My Internet Connection to PPPoE



### 3.5 Input the PPPoE username and password provided by us, then click “Save”. You can find these username and password in the Service Activation Notice Email. et Reconnect Mode to “Always On”. (Please save other as default.)

Settings >> Internet >> IPv4

VLAN IPv6 Save

My Internet Connection is: PPPoE

Username: sample123

Password: sample123

Reconnect Mode: On demand

Maximum Idle Time: 5 minutes

Advanced Settings...

Username and Password

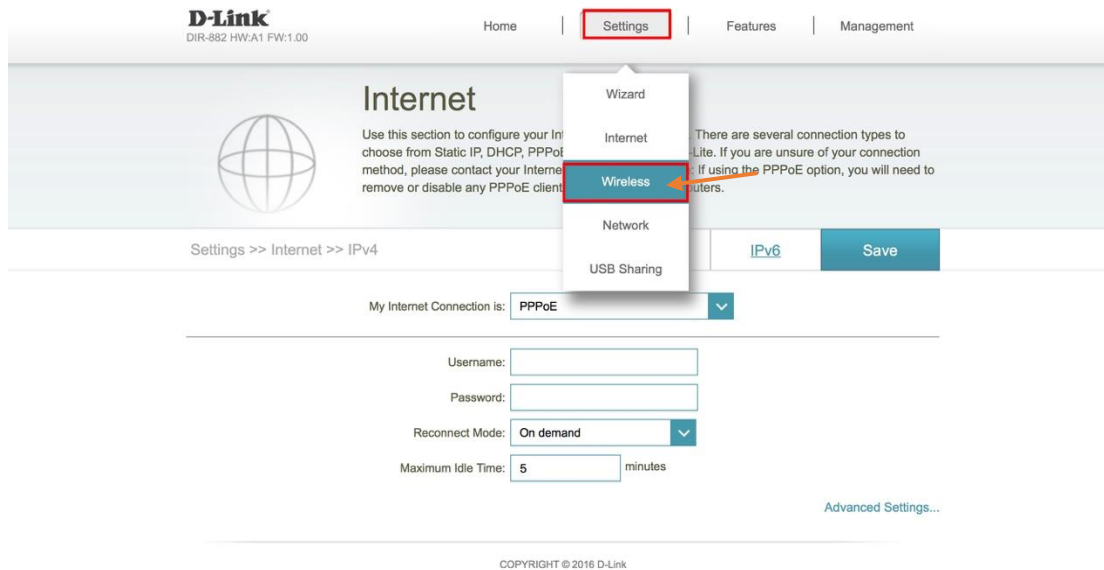
Always on

- 3.6 After a while, the second on the left light of your router is solid green which means you can access the Internet now.



## 4 Optional: Change your WiFi name and password/PIN

- 4.1 **Change WiFi name & Password/PIN:**  
Click Setting -> Wireless Settings.



**D-Link**  
DIR-882 HW:A1 FW:1.00

Home | **Settings** | Features | Management

## Internet

Use this section to configure your Internet connection. There are several connection types to choose from Static IP, DHCP, PPPoE, etc. If you are unsure of your connection method, please contact your Internet Service Provider. If using the PPPoE option, you will need to remove or disable any PPPoE client on your computer.

Settings >> Internet >> IPv4

My Internet Connection is: **PPPoE**

Username:

Password:

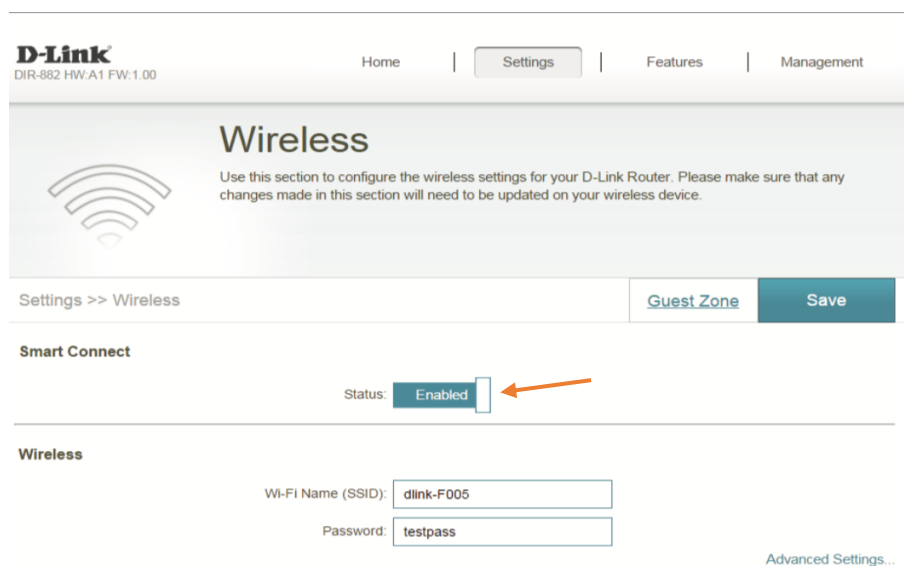
Reconnect Mode: **On demand**

Maximum Idle Time:  minutes

[Advanced Settings...](#)

COPYRIGHT © 2016 D-Link

### Disable the Smart Connect



**D-Link**  
DIR-882 HW:A1 FW:1.00

Home | **Settings** | Features | Management

## Wireless

Use this section to configure the wireless settings for your D-Link Router. Please make sure that any changes made in this section will need to be updated on your wireless device.

Settings >> Wireless

[Guest Zone](#) [Save](#)

### Smart Connect

Status: **Enabled**


### Wireless

Wi-Fi Name (SSID):

Password:

[Advanced Settings...](#)

Then, you can find 2.4GHz WiFi and 5GHz WiFi. You can enter your WiFi name in Wireless Network Name in this page. Click “Save” bottom after changing.


DVA-2800 HW:T1 FW:AU\_2.00b10a

[Home](#)
[Settings](#)
[Features](#)
[Management](#)
[Logout](#)

## Wireless

Use this section to configure the wireless settings for your D-Link Router. Please make sure that any changes made in this section will need to be updated on your wireless device.

Settings >> Wireless [Multiple SSID](#) [Save](#)

### 2.4GHz

Status: [Enabled](#)

Wi-Fi Name (SSID): OCCOM-sample123  
Password: \*\*\*\*\*

Change your WiFi name in here  
Change your WiFi password in here

[Advanced Settings...](#)

### 5GHz

Status: [Enabled](#)

Wi-Fi Name (SSID): OCCOM-sample123-5G  
Password: \*\*\*\*\*

You can change your 5GHz WiFi in here  
Things are same with 2.4GHz page

[Advanced Settings...](#)

### WI-FI PROTECTED SETUP

PBC: [Trigger PBC](#)

**\*Note:** Because DIR-882 is a dual band router, so it has 2 bands 2.4GHz and 5GHz. The settings in 2.4GHz and 5GHz are same.

**\*Careful:** Once you change your WiFi name or password, your device needs to reconnect with WiFi.