

ASUS RT-AX57 AX3000

Configuration Guide

V1.0



Content

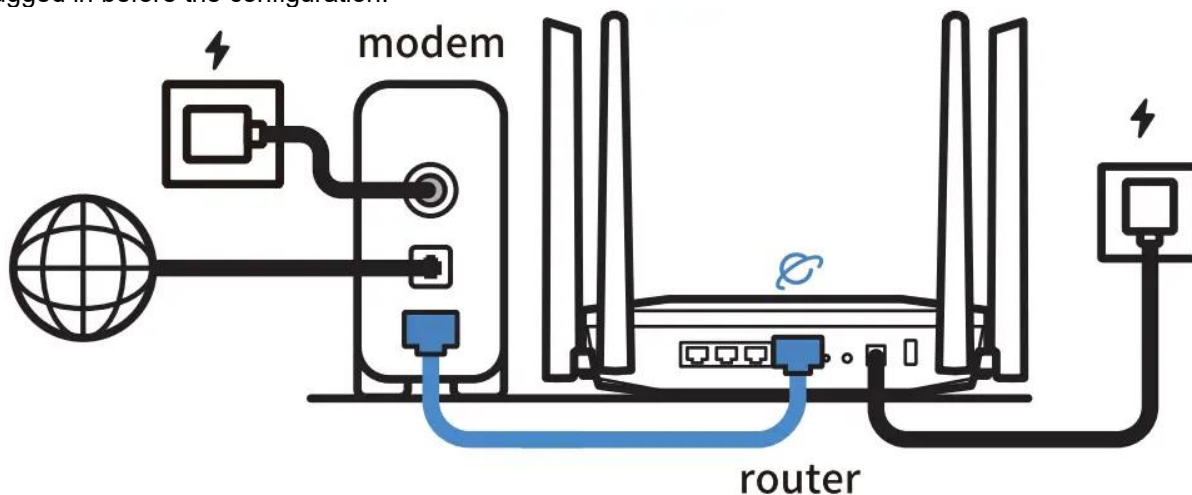
1.	Router Connection & Setup.....	1
2.	Router Set-up.....	2
3.	Router Configuration	2
4.	Advanced settings.....	6
5.	Adding mesh AP by AiMesh (option).....	8
6.	Appendices	9

1. Router Connection

1.1 Power up the router with the power adapter.

1.2 Connect the WAN port to the LAN 1/UNID1 port of the Fiber Box (i.e., NBN NTD) via the Ethernet cable.

The End User's router may be set up before. Reset is required to occur before configuration. The WAN port can be plugged in before the configuration.



2. Router Set-up

There are two methods to connect with your router:

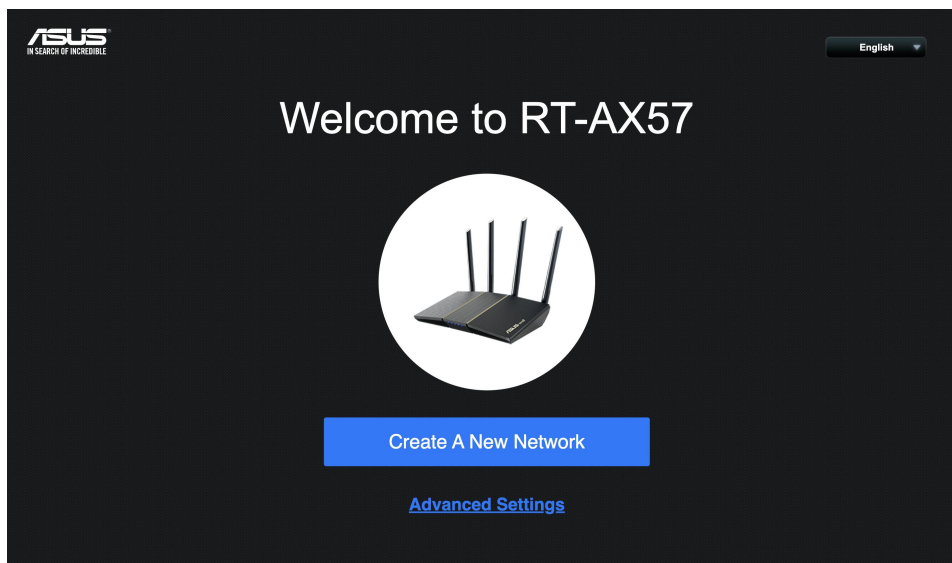
- A. **Ethernet cable connection:** Connect the **laptop/PC** to any of the **LAN ports** (1 – 4 of router) via **Ethernet cable**.
- B. **Wi-Fi Connection:** Connect your **device** (laptop, iPad, or spare phone) to the default **Wi-Fi**.

*How to check the default Wi-Fi detail: Use SSID on the **back of the router** (no Wi-Fi password required).

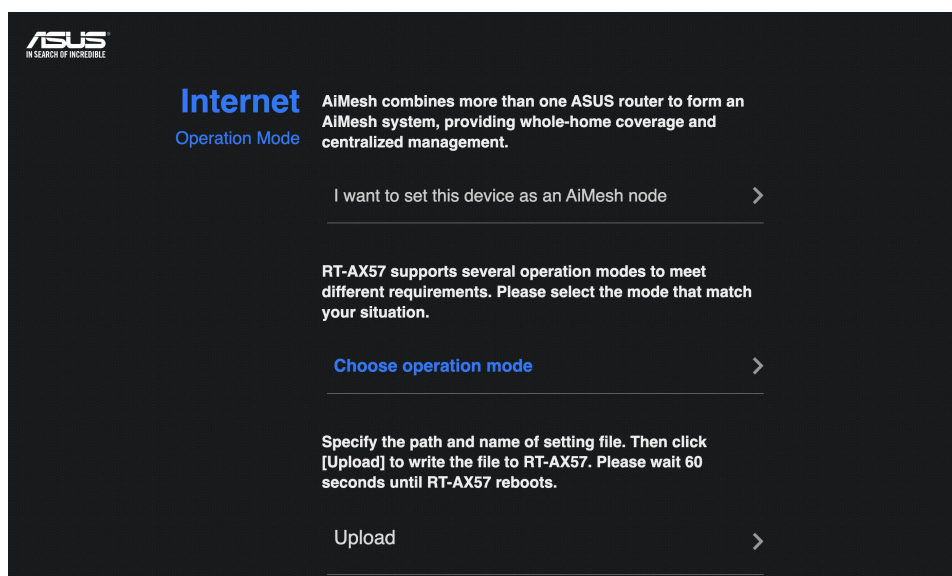


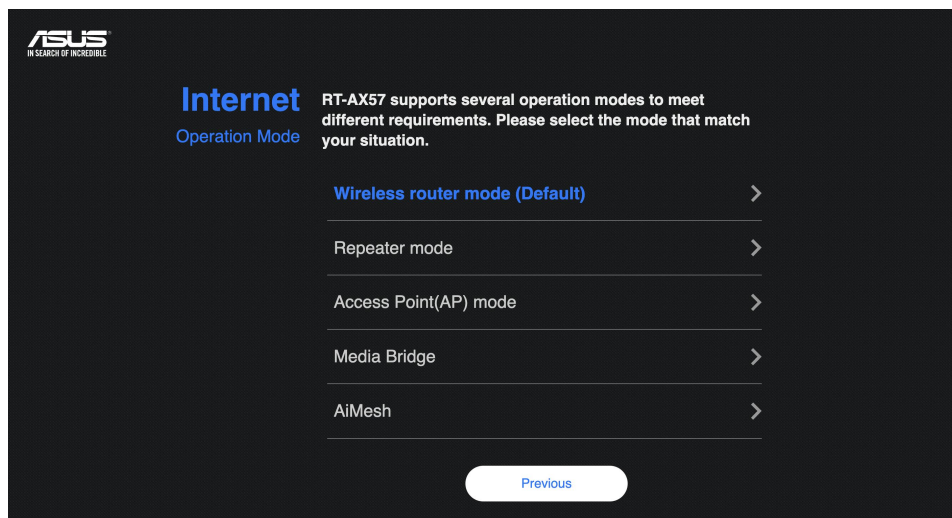
3. Router Configuration

- 3.1. Open the Internet browser (e.g., Google Chrome, Safari, etc.) and input <http://192.168.50.1/> in the address bar to visit the router's configuration page. Click Advanced Settings.

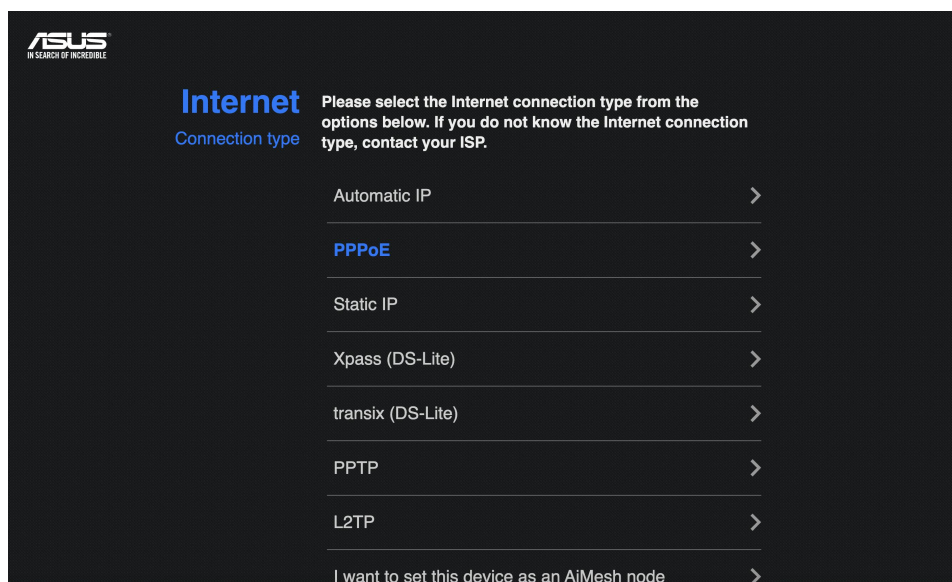



3.2. Click **Choose operation mode** and select **Wireless router mode**.





3.3. Select **PPPoE** and Input the PPPoE username and password provided by the ISP, then click Next.





Internet

ISP Account Setting

Enter the username and password for your Internet connection information. These settings were given by your Internet Service Provider (ISP).

Username

Password

Previous Next

- 3.4. Enable **Separate 2.4 GHz and 5 GHz**. Set the Wi-Fi name to “Occom_XXXX” and “Occom_XXXX_5G” that XXXX is the last 4 digits of the MAC address. Set the password as the same password as the PPPoE password or whatever the customer prefers (the router does not have a default password). Click **Apply** after changing.

Wireless

Settings

Assign a unique name or SSID (Service Set Identifier) to help identify your wireless network.

2.4 GHz Network Name (SSID)

2.4 GHz Wireless Security

Very Strong

5 GHz Network Name (SSID)

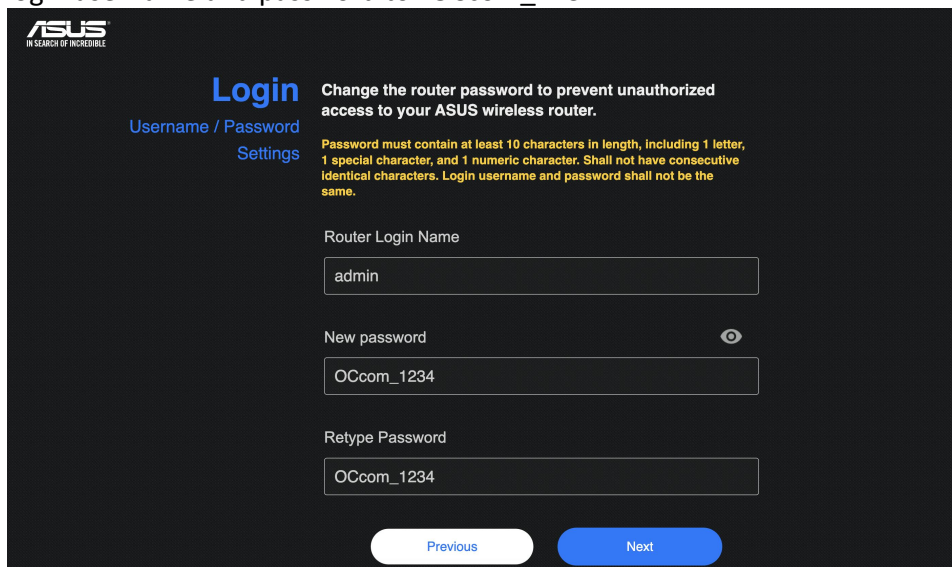
5 GHz Wireless Security

☒ Separate 2.4 GHz and 5 GHz

Previous Apply

***Caution:** Once you change your Wi-Fi name or password, your device needs to reconnect with Wi-Fi by using the new Wi-Fi name and password.

3.5. Input new login username and password to “OCcom_1234”.

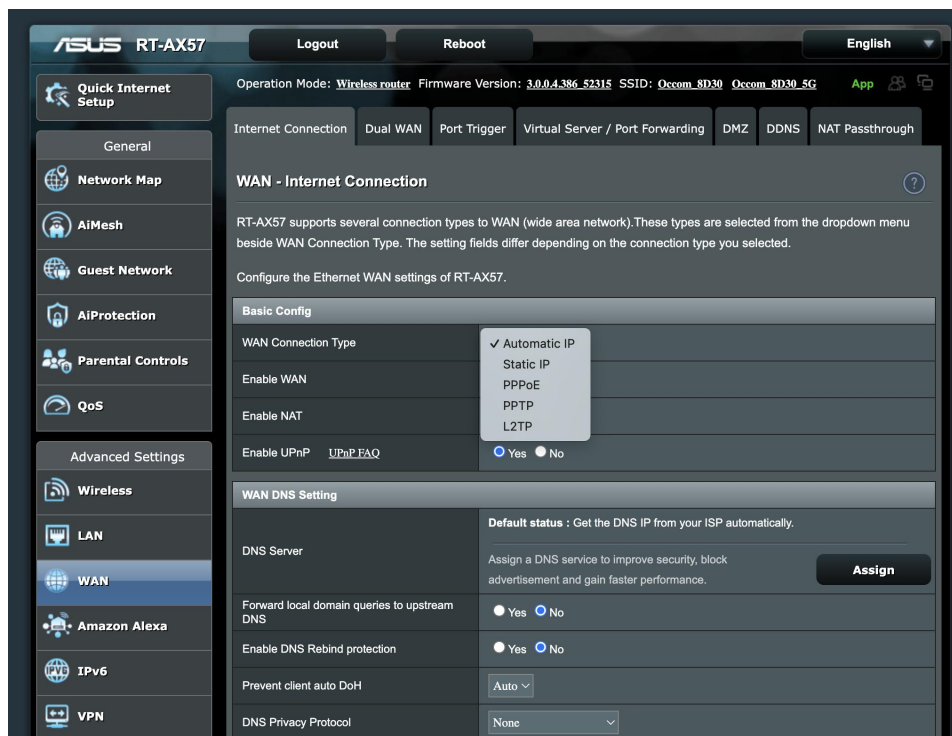


The image shows the ASUS router login interface. At the top left is the ASUS logo with the tagline 'IN SEARCH OF INCREDIBLE'. The main heading is 'Login' in blue. Below it are two links: 'Username / Password' and 'Settings'. To the right of the 'Login' heading, there is a warning: 'Change the router password to prevent unauthorized access to your ASUS wireless router.' Below this, a yellow note states: 'Password must contain at least 10 characters in length, including 1 letter, 1 special character, and 1 numeric character. Shall not have consecutive identical characters. Login username and password shall not be the same.' The form contains three input fields: 'Router Login Name' with the value 'admin', 'New password' with the value 'OCcom_1234', and 'Retype Password' with the value 'OCcom_1234'. There is an eye icon next to the 'New password' field. At the bottom are two buttons: 'Previous' and 'Next'.

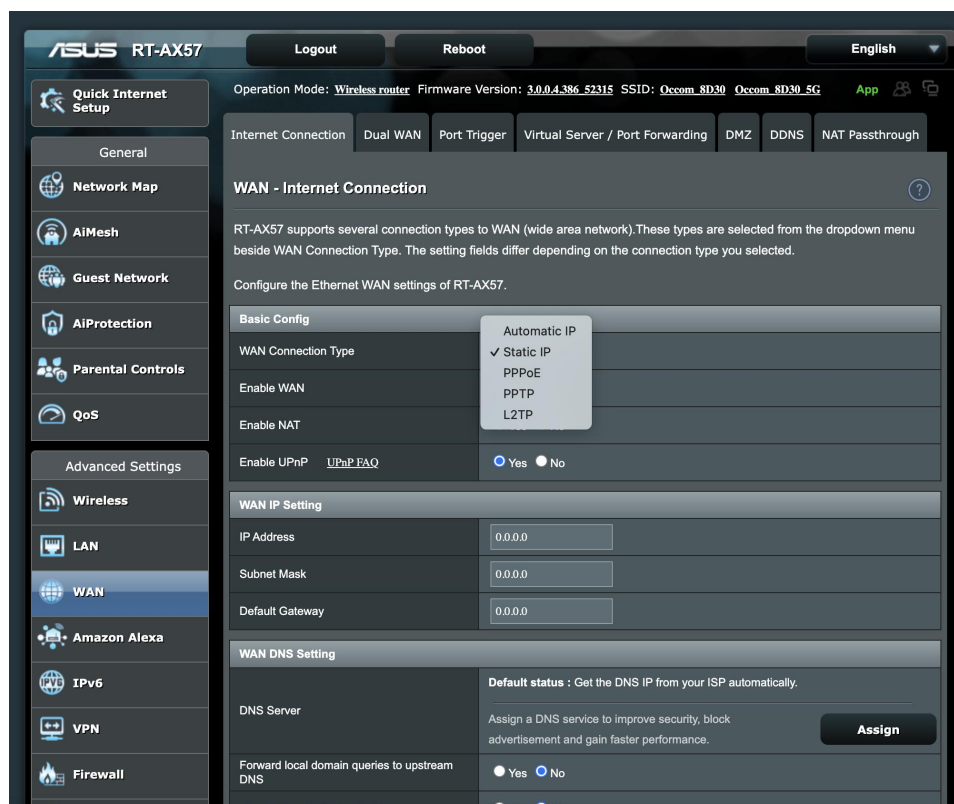
4. Advanced settings

4.1. WAN connection for other mode:

- Dynamic IP: click WAN under Advanced Settings and select Automatic IP.

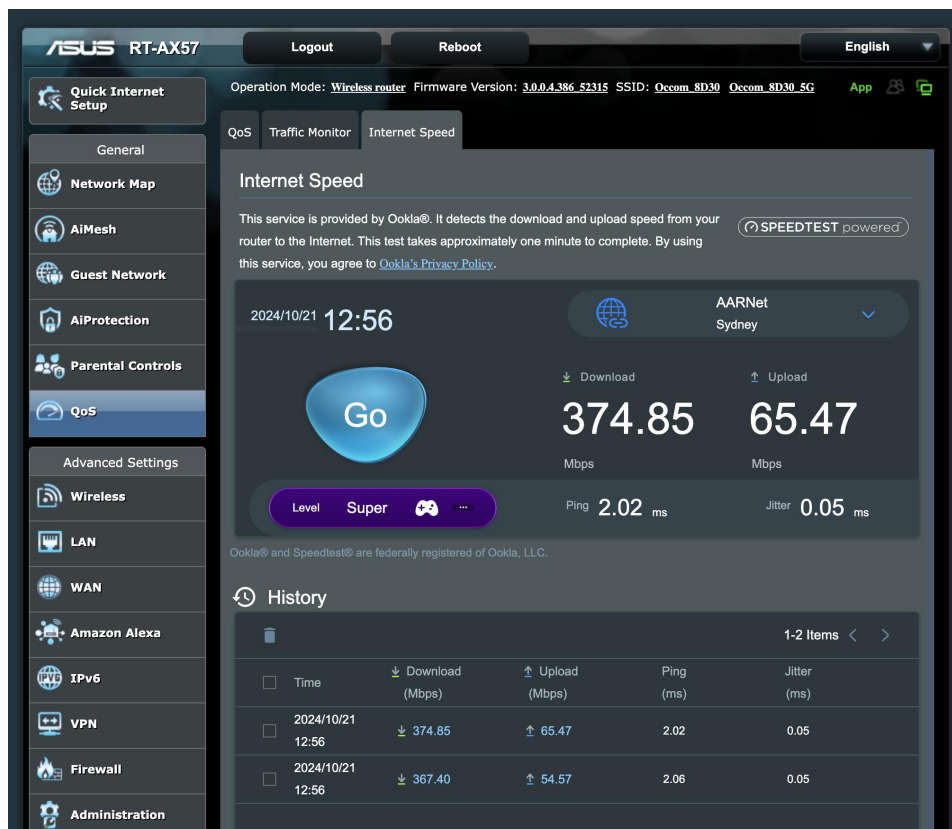


- Static IP: click WAN under Advanced Settings and select Static IP, and input the related information provided by Occom into the WAN IP Setting window.



4.2. CPE Build-in Speed Test.

Click **Internet Speed** under **Traffic Manager**, and then click Go to run the speed test.



4.3 (Optional) Enable Remote Access via WAN IP

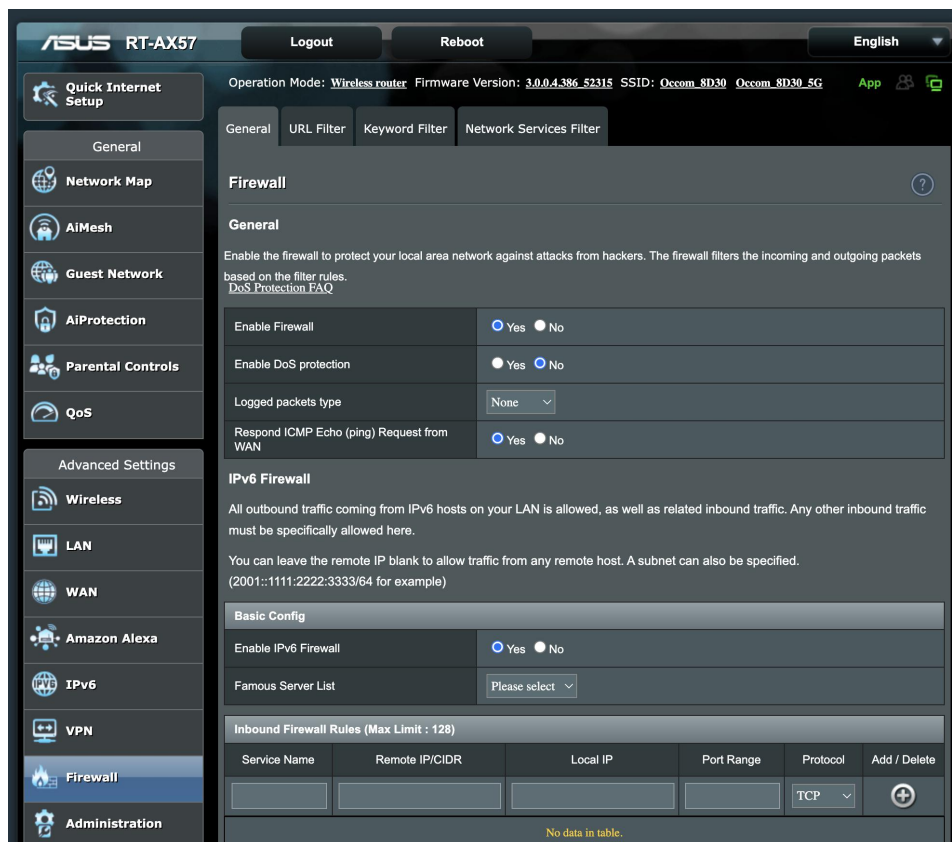
Administration>System> Remote Access Config, select **Yes** to enable remote access the setting page via WAN IP.

Firewall	Enable Reboot Scheduler	<input type="radio"/> Yes <input checked="" type="radio"/> No
Administration	Service	
System Log	Enable Telnet ?	<input type="radio"/> Yes <input checked="" type="radio"/> No
Network Tools	Enable SSH	No
	Idle Timeout	20 minute(s) (Disable : 0)
	Local Access Config	
	Authentication Method	Default
	HTTPS LAN port	8443 <small>Access setting page via https://192.168.50.1:8443 * Please use port 1024-65535.</small>
	Download Certificate	<input type="button" value="Export"/> <input type="button" value="Renew Server Certificate"/> <input type="button" value="Renew Root Certificate"/> <small>Download and install SSL certificate on your browser to trust accessing your local domain "www.asusrouter.com" with HTTPS protocol. To export certificate after applying setting. FAQ</small>
	Remote Access Config	
	Enable Web Access from WAN	<input checked="" type="radio"/> Yes <input type="radio"/> No <small>Only HTTPS is supported when accessing the web UI from WAN. FAQ</small>
	HTTPS Port of Web Access from WAN	8443 <small>Access setting page via https://10.10.9.157:8443</small>
	Enable Access Restrictions	<input type="radio"/> Yes <input checked="" type="radio"/> No
	<input type="button" value="Apply"/>	

[Help & Support](#)
[Manual](#)
[Product Registration](#)
[Feedback](#)
[FAQ](#)

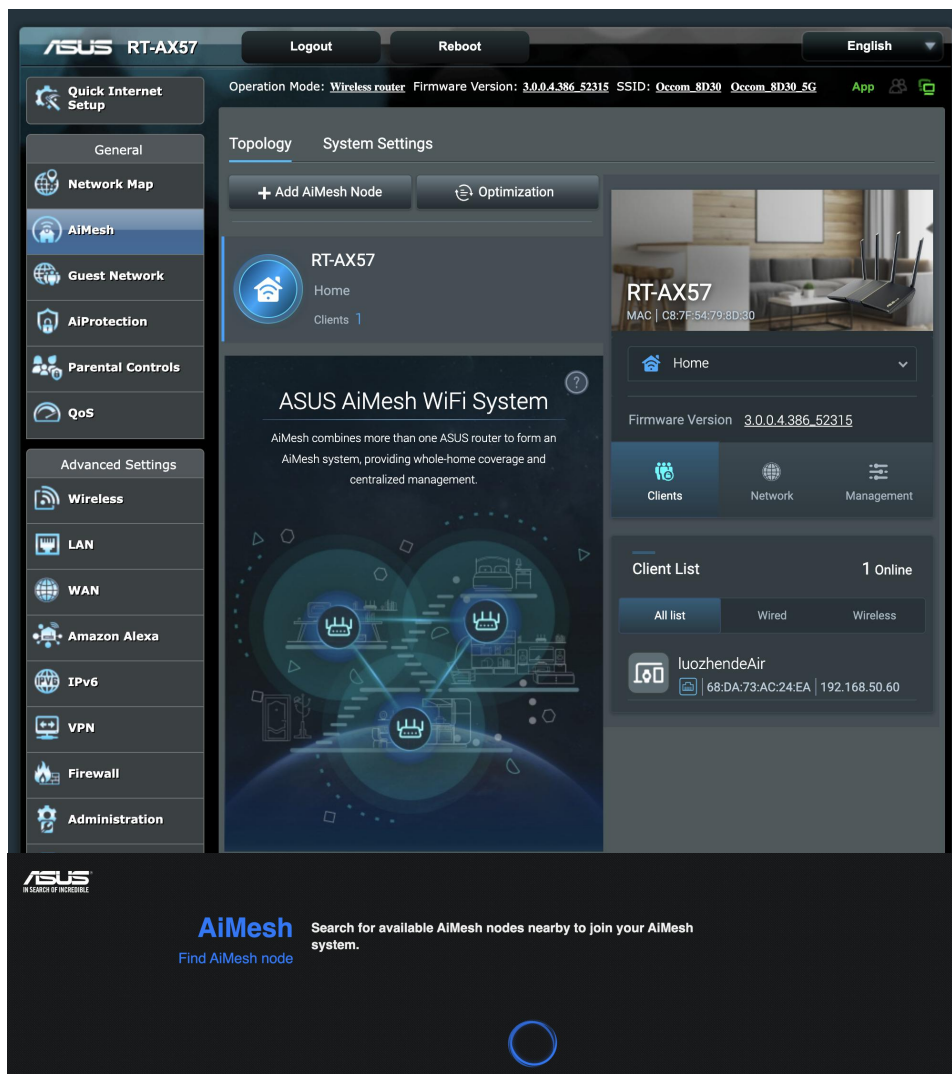
4.4 (Optional) Enable Respond ICMP Echo Ping Request from WAN

Firewall>General> Respond ICMP Echo (ping) Request from WAN, select Yes to enable ICMP Ping request from WAN.



5 Adding mesh AP by AiMesh

Power on the AP, and then click +Add AiMesh Node under AiMesh within the configuration page of the primary router, then the primary router will search for available AiMesh AP nearby to join the same network.



6 Appendices

Some videos about ASUS RT-AX57 AX3000 set up via the ASUS App

- <https://www.youtube.com/watch?v=C3O8ZpirEtg&t=141s>

